

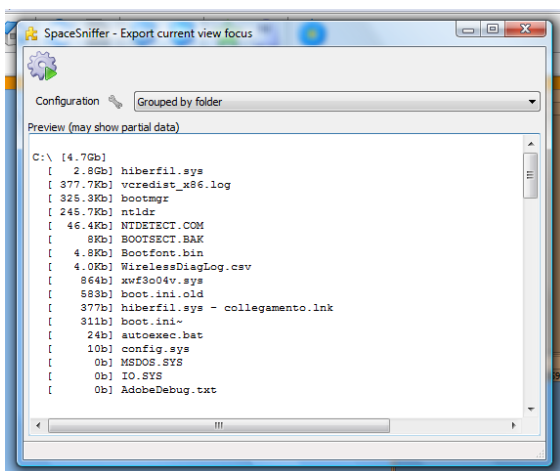
SpaceSniffer

Copyright © 2007-2009 Uderzo Umberto – www.uderzo.it

Find lost space on your disks the easy way.

Export customization

The SpaceSniffer export module is capable of producing textual reports. The export engine is customizable and lets you to have many export configurations, one for each specific need.

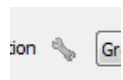


The "runtime" export module

When the export module is first shown in a SpaceSniffer work session, it is in "run time" mode. This means that it's hiding all its complexity and tries to appear as simple as possible to the user.

This is the default use behavior and all users except who wants to customize the export configuration should use this mode.

But, this is the "Export Customization" guide, so this means that you want to customize the export configuration.



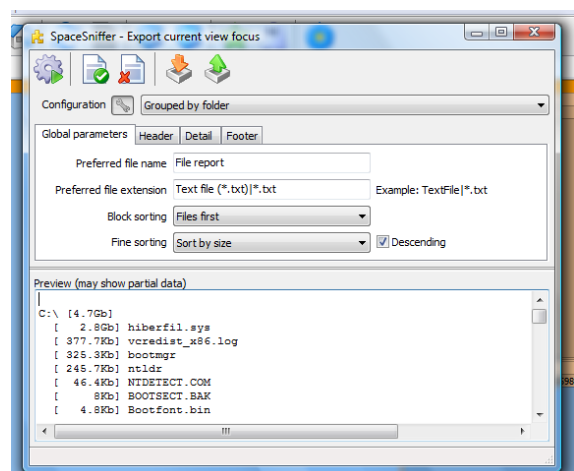
Click this

To do so, you need to click the small wrench icon next the configuration drop down list.

Then, the "design time" mode is engaged. If you press again the wrench icon you switch back to run time mode.

The design time mode shows more icons on the upper tool bar and a new design section in the middle of the window. This section is splitted in many parts, each one reachable by its own tab.

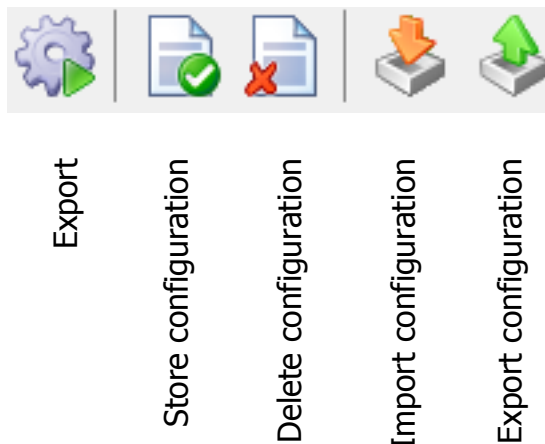
This is where you customize your configuration. The first tab contains global informations about the export configuration. The following tabs contain the export configuration itself. There is a tab for the header, a tab for the detail and a tab for the footer.



The "design time" export module

The tool bar

Let's first have a look at the tool bar icons:



In order:

- **Export:** starts the export. A file save dialog opens asking you where you want to save the report.
- **Store configuration:** stores the current configuration in SpaceSniffer configuration file. You are prompted for a configuration name. If the name already exists you receive an overwrite warning. The first time you save a configuration, also all the built-in configurations are stored, so you can modify them.
- **Delete configuration:** removed the selected configuration from the SpaceSniffer configuration file, after a confirmation request. If the last configuration is removed, then the built-in configurations reappear.
- **Import configuration:** you can import a single configuration from file. This lets you share a configuration between many SpaceSniffer configuration files. If you think that you produced a good configuration file, you can send it to info@uderzo.it and, after a quality evaluation, it will be shared on the web site with your name.
- **Export configuration:** this command lets you export the current selected configuration to file.

The global information panel

The global parameters panel

This panel contains global information about the current configuration. You can specify the preferred file name and extension (there is a syntax to correctly define the file extension, please have a look directly at the example in the panel).

You can also specify the primary and secondary sorting:

- **Block sorting:** is the primary sorting, where you specify if, for each folder, you want listed first all sub folders, first all contained files or if you don't care.
- **Fine sorting:** is the secondary sorting, where you specify how to sort folders and files. If you don't care, you can specify here. The descending check box is used to invert the sorting.

The header, detail, footer panels

All these three panels work the same. The header is used to define a report header, the footer to define a report footer and the detail is used for each folder or file to be exported.

The script editor

The only difference between the three panels is that for header and footer panels only the information of the root container is available (consider the root as the currently zoomed element in the active view). Let's consider the detail panel, for example.

There is a small text editor where you can type the text that will be exported to file. If you type simple text, this will be exported as-is, without modifications. Even tabs and newlines are considered for the export. When you type something, the preview panel reflects your changes.

This is not so interesting. What we need is to export file and folder data. Here we introduce the two main elements of the scripting engine:

- **Tags:** a tag is a keyword surrounded by `<%` and `%>`. For example, `<%path%>`. When you type a tag into a script, it is expanded with the corresponding value of the folder or file. There is a lot of tags, just explore all of them by right clicking the mouse over the script editor.
- **Commands:** while tags contain textual information about the exported element, commands are used to adapt the output to your needs. Commands are always enclosed in `{...}` chars. There are commands for formatting, for testing and so on. You can find all available commands by right clicking the mouse on the script editor.

You may notice that everything you type is exported. So you cannot indent your code because the indentation will be exported. This mode is suited for very simple scripts but when you need to indent your code you need to switch to the "script" mode, by inserting the `{script}` command at the start of the script. This command will disable the exporting of tabs and newlines. At this point, if you really need to export a tab or a newline, you must use the `{&tab}` and `{&br}` commands. These commands work also in simple mode, they just mix with normal tabs and newlines.

Note: *Consider that commands can be nested to reach your target.*

This is a really short introduction to the scripting engine. Hope this is useful to introduce you to the export customization. **Now, let's experiment!**

Copyright © 2007-2009 Uderzo Umberto, please read the Disclaimer